

## CONFIGURATION

/S Modifier 65-45-12 Ductile Iron, Buna-N, Dewatering Oil

## TECHNICAL DATA

|                        |               |
|------------------------|---------------|
| Body Type              | Line mount    |
| Interface              | None          |
| Body Features          | Ninety degree |
| Mounting Hole Diameter | 7,1 mm        |
| Mounting Hole Quantity | 1             |
| Open Cavities          | 1             |
| Cavity                 | T-162A        |
| Port Size              | 1/4" BSPP     |
| Model Weight           | 0.27 kg.      |

## NOTES

**Important:** Carefully consider the maximum system pressure. The pressure rating of the manifold is dependent on the manifold material, with the port type/size a secondary consideration. Manifolds constructed of aluminum are not rated for pressures higher than 3000 psi (210 bar), regardless of the port type/size specified.

## PORT DESIGNATORS

| Modifiers     | Ports                 |
|---------------|-----------------------|
| AAT, /10, /11 | All Ports: 1/4" BSPP; |

## CONFIGURATION OPTIONS

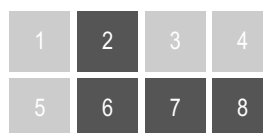
Model Code Example: AAT/S

### MODIFIER (S)

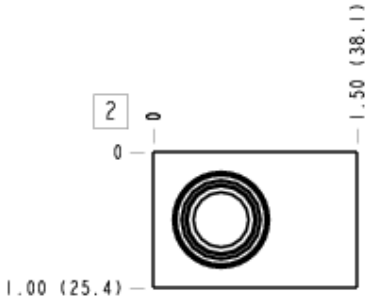
- /S** 65-45-12 Ductile Iron, Buna-N, Dewatering Oil  
6061-T651 Aluminum, Buna-N
- /11** 6061-T651 Aluminum, Buna-N, Clear Anodize - Per MIL SPEC 8625F Type II, Class I
- /10** 6061-T651 Aluminum, Buna-N, Black Anodize - Per MIL SPEC 8625F Type II, Class II
- /S4** 65-45-12 Ductile Iron, Buna-N, Chem. Black
- /S3** 65-45-12 Ductile Iron, Buna-N, Trivalent Clear Zinc with Top Sealer

## MANIFOLD FACES

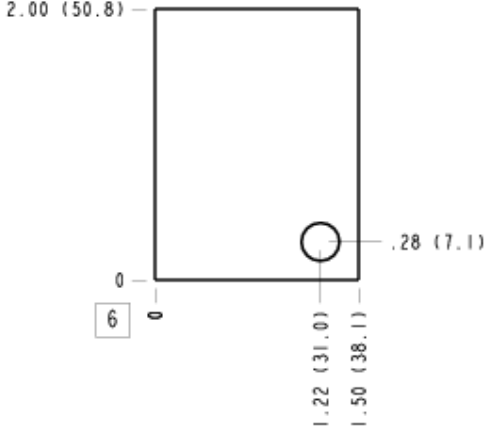
### FACE GRID



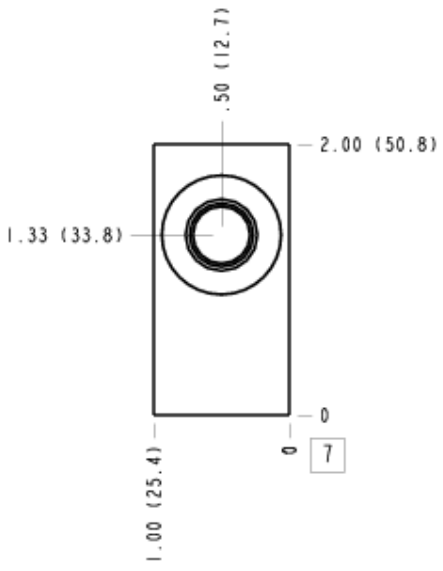
**Face 2**



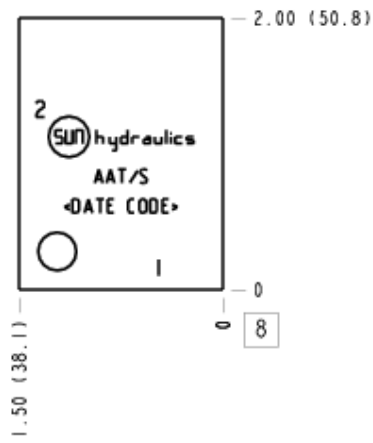
**Face 6**



**Face 7**



### Face 8



### Face 10

