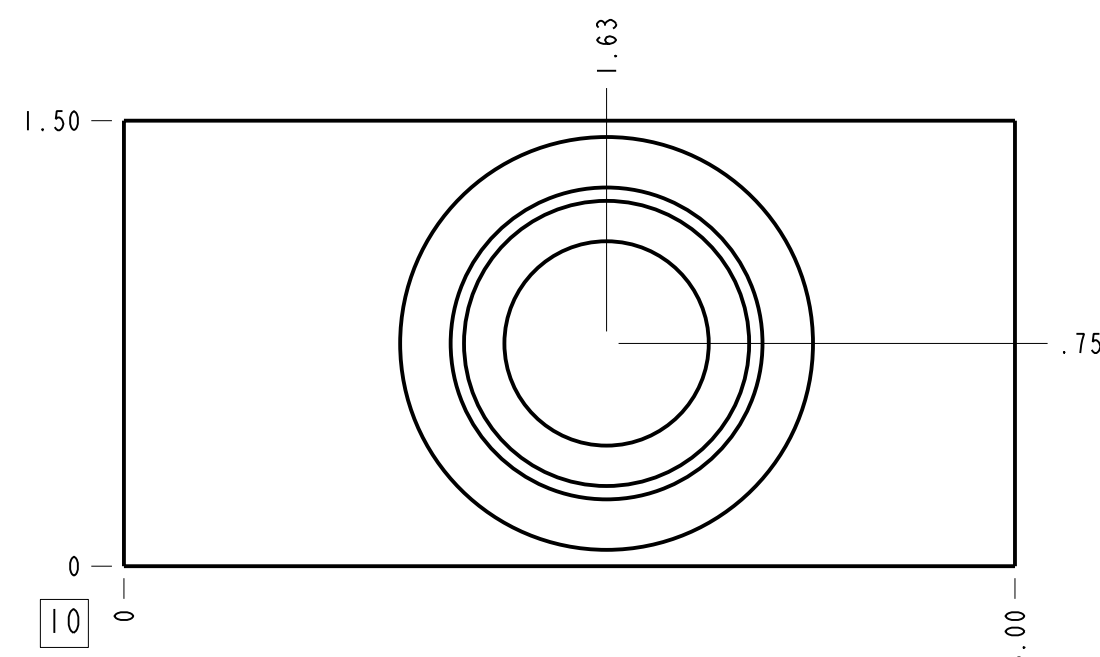
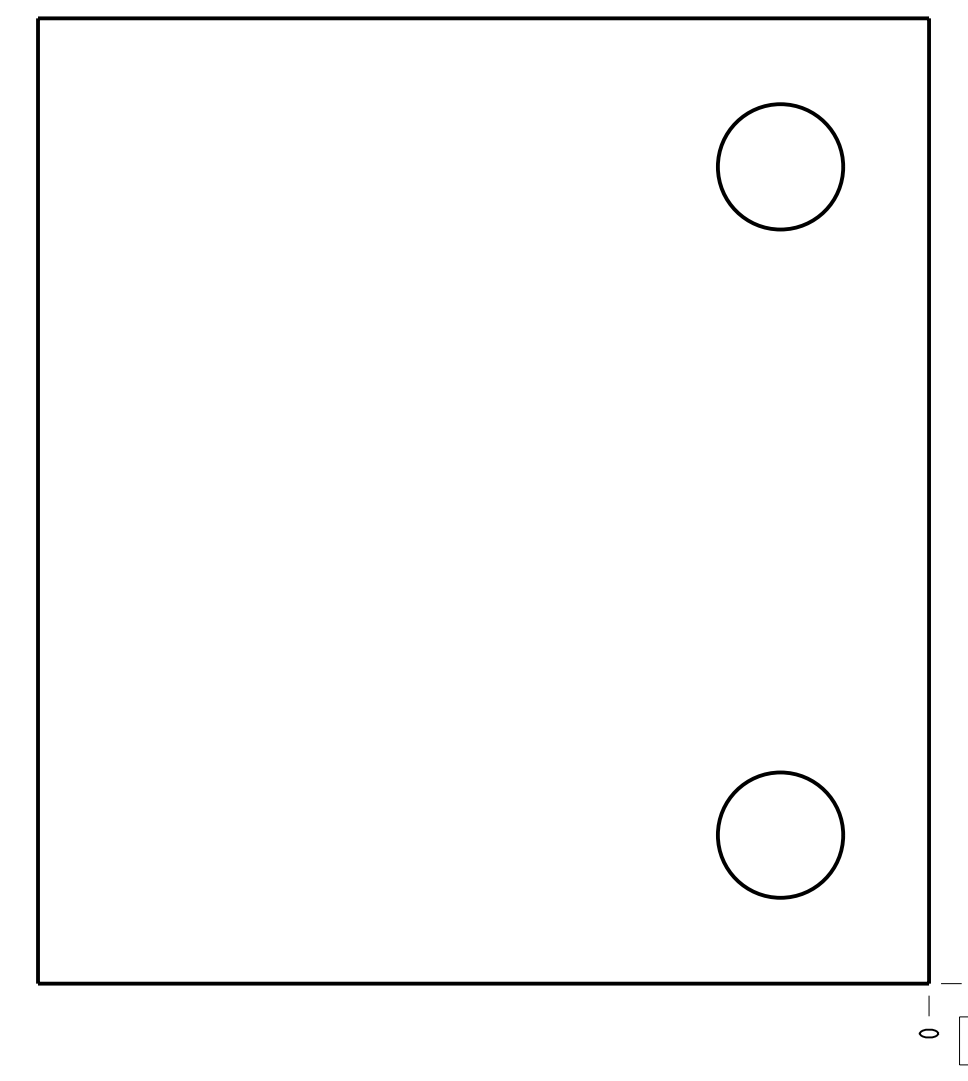
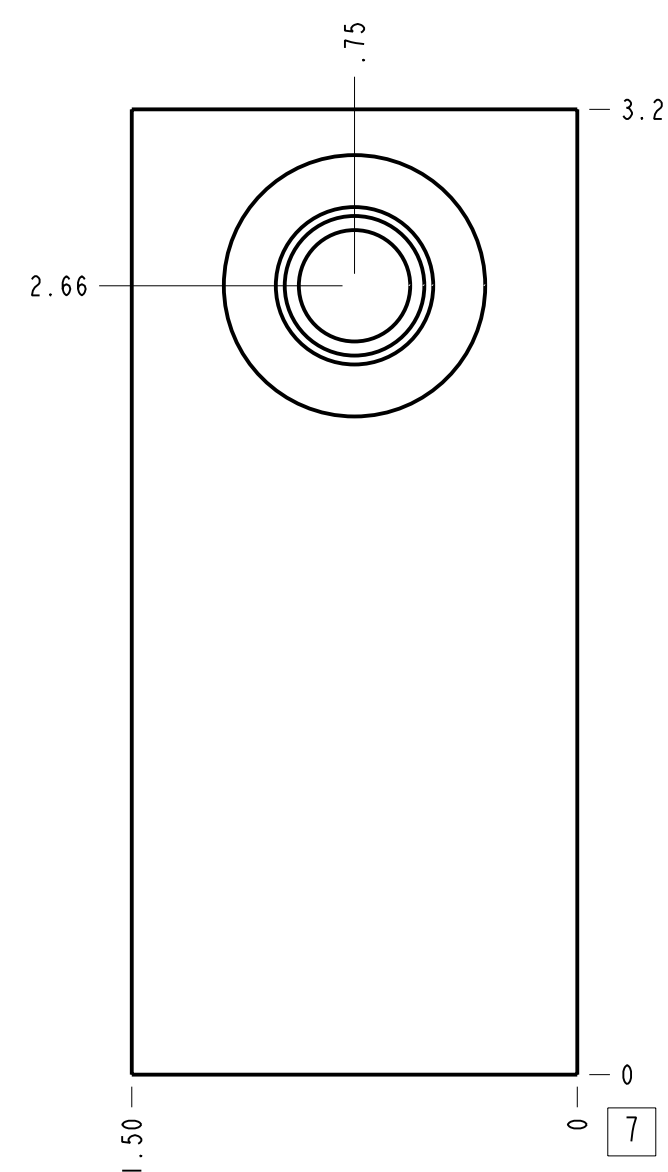
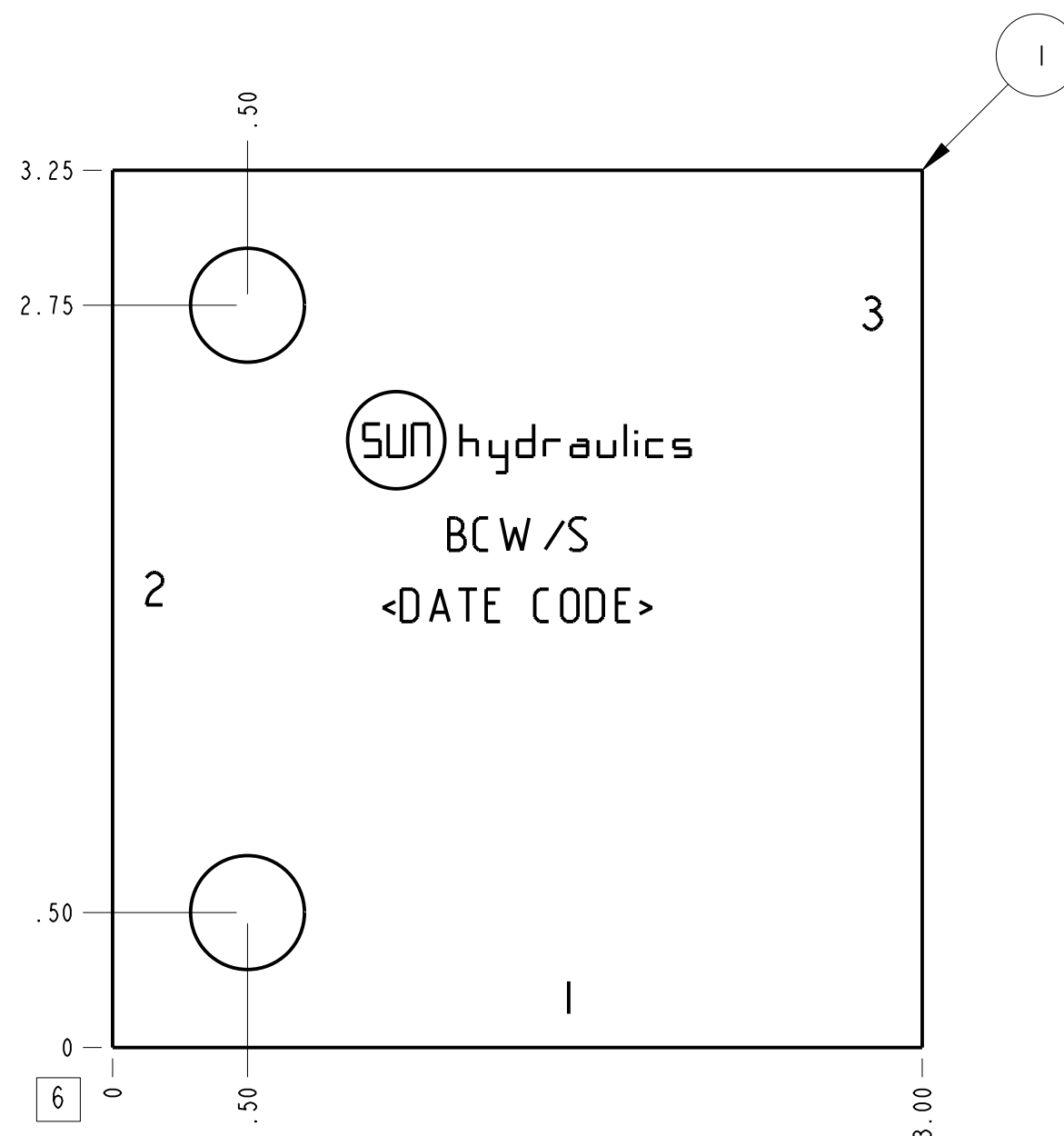
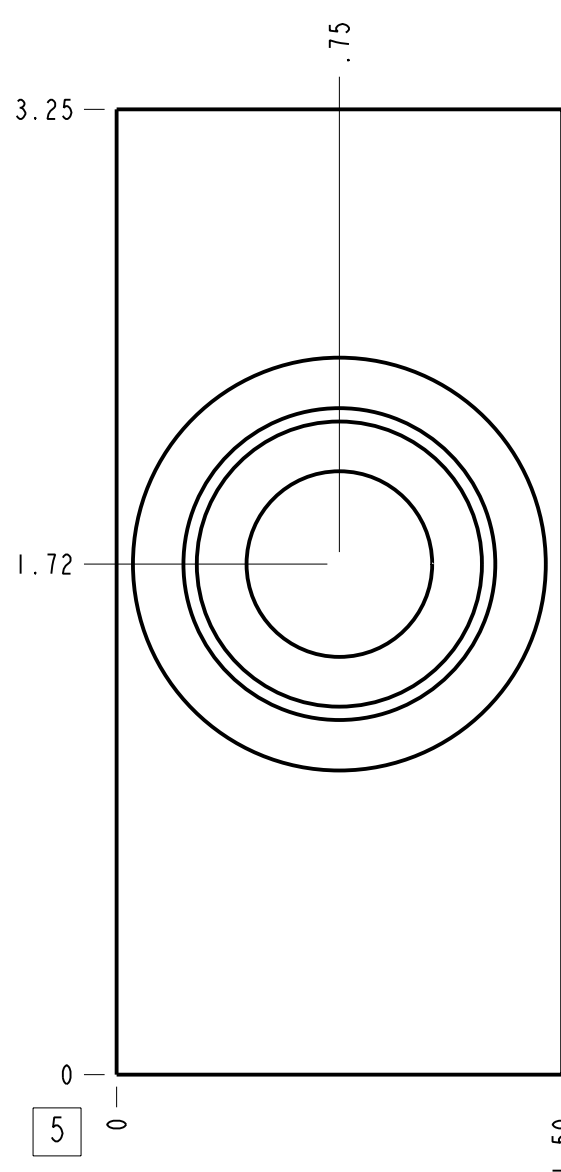
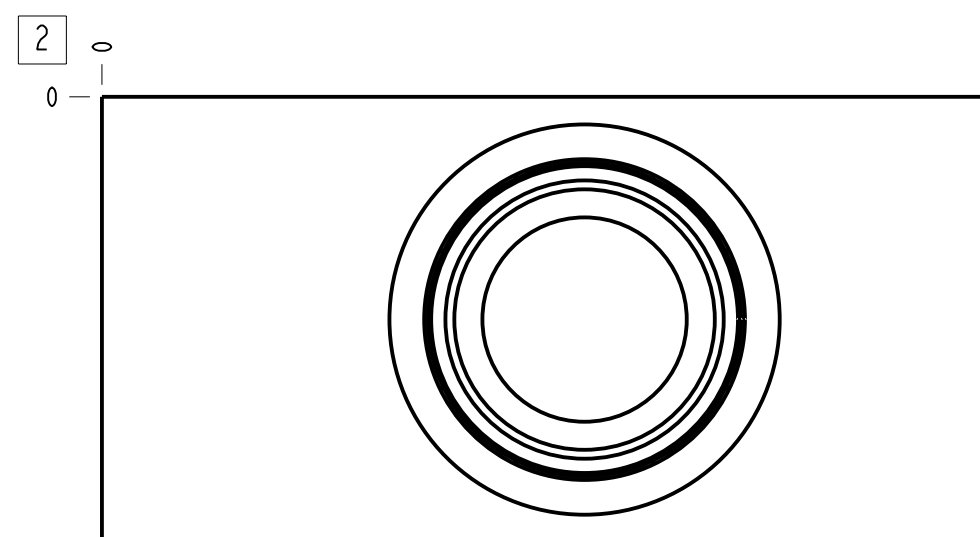


Technical Data	U.S. Units	Metric Units
Cavity		T-2A
Body Features		Ninety degree
Body Type		Line mount
Interface		None
Open Cavity Quantity		1
Weight	2.772 lb.	1,257 kg.
Mounting Hole Diameter	.42 in.	10,7 mm
Mounting Hole Depth		Through
Mounting Hole Quantity		2



Notes

- Important: Carefully consider the maximum system pressure. The pressure rating of the manifold is dependent on the manifold material, with the port type/size a secondary consideration. Manifolds constructed of aluminum are not rated for pressures higher than 3000 psi (210 bar), regardless of the port type/size specified.
- This drawing is for reference only. It is generated by an automated process and does not fall under Sun's document control process.

Port Headings		
Product	Port	Size
BCW/S	Ports 1 & 2	3/4" BSPP
BCW/S	Port 3	1/4" BSPP

ITEM	150-147-011	SETTING	DUCTILE IRON	BODY	QTY
MODEL	BCW/S				
DESCRIPTION	T-2A Line mount Ninety degree	DATE	SCALE	DWG SIZE	SHEET
		Sep-01-23	1.547	C	1

ALL DIMENSIONS IN INCH
VIEWS ARE THIRD ANGLE