

**TECHNICAL DATA**

|                        |                                |
|------------------------|--------------------------------|
| Body Type              | Line mount                     |
| Interface              | None                           |
| Body Features          | Through port 1 with gauge port |
| Mounting Hole Thread   | M10x1.5 - 6H                   |
| Mounting Hole Depth    | 15,7 mm                        |
| Mounting Hole Quantity | 2                              |
| Open Cavities          | 1                              |
| Cavity                 | T-2A                           |
| Port Size              | 3/4" BSPP                      |
| Model Weight           | 0.79 kg.                       |

**NOTES**

**Important:** Carefully consider the maximum system pressure. The pressure rating of the manifold is dependent on the manifold material, with the port type/size a secondary consideration. Manifolds constructed of aluminum are not rated for pressures higher than 3000 psi (210 bar), regardless of the port type/size specified.

**PORT DESIGNATORS**

| Modifiers     | Ports  |
|---------------|--|
| BHW, /10, /11 | Ports 1A & 1B: 3/4" BSPP; Port 3: 1/4" BSPP; Gage Port: 1/4" BSPP; |

**CONFIGURATION OPTIONS**

Model Code Example: BHW

**MODIFIER**

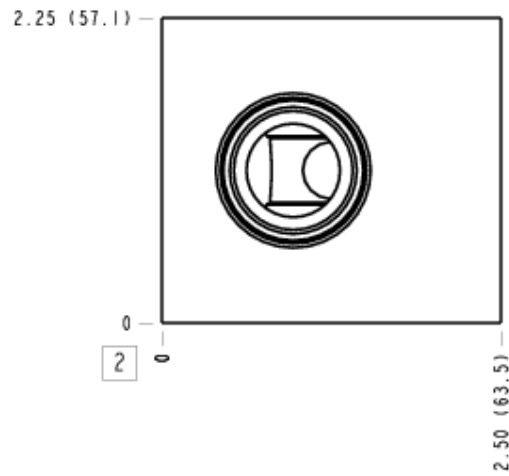
- 6061-T651 Aluminum, Buna-N**
- /11** 6061-T651 Aluminum, Buna-N, Clear Anodize - Per MIL SPEC 8625F Type II, Class I
- /10** 6061-T651 Aluminum, Buna-N, Black Anodize - Per MIL SPEC 8625F Type II, Class II
- /S** 65-45-12 Ductile Iron, Buna-N, Dewatering Oil
- /S4** 65-45-12 Ductile Iron, Buna-N, Chem. Black
- /S3** 65-45-12 Ductile Iron, Buna-N, Trivalent Clear Zinc with Top Sealer

# MANIFOLD FACES

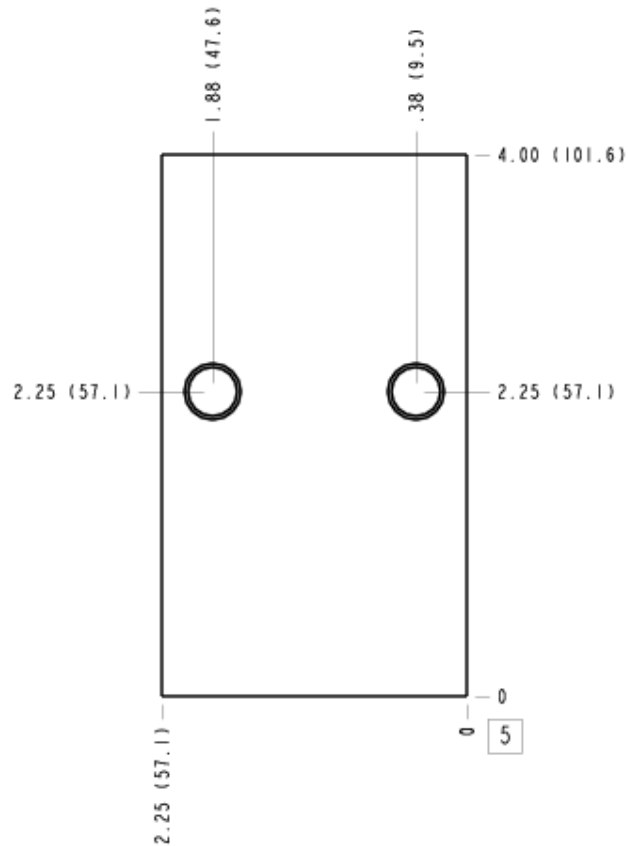
## FACE GRID

|   |    |    |    |
|---|----|----|----|
| 1 | 2  | 3  | 4  |
| 5 | 6  | 7  | 8  |
| 9 | 10 | 11 | 12 |

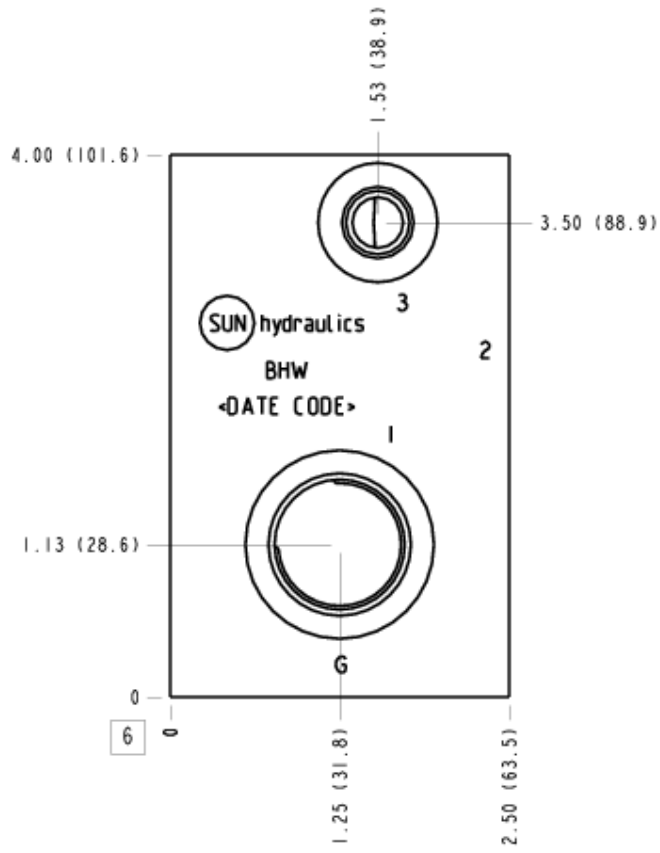
### Face 2



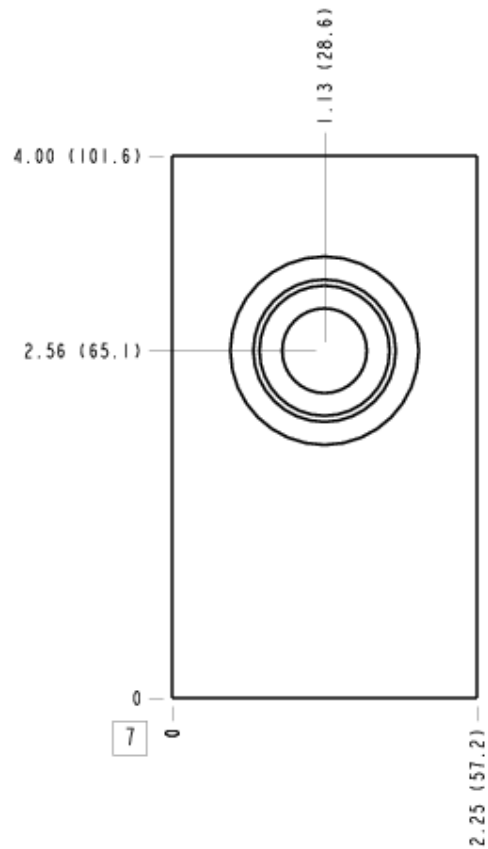
### Face 5



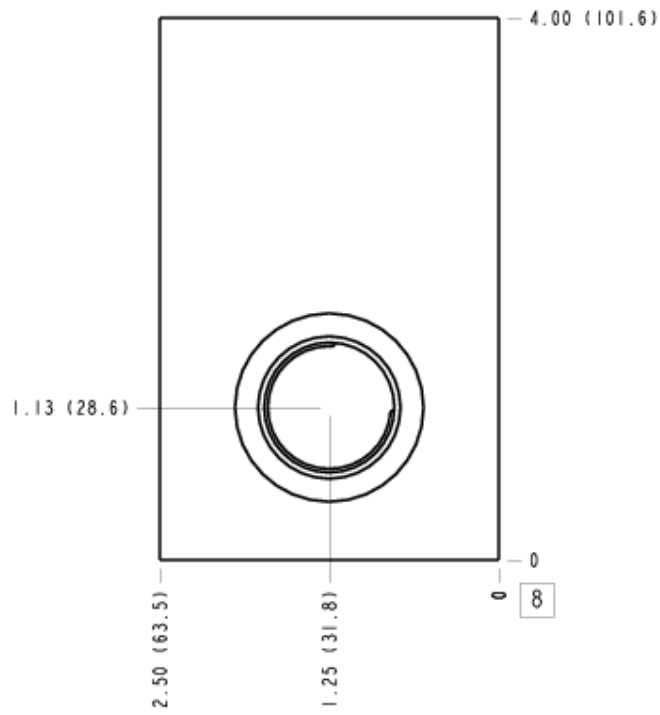
### Face 6



### Face 7



### Face 8



### Face 10

