

## CONFIGURATION

(none) Modifier 6061-T651 Aluminum, Buna-N

## TECHNICAL DATA

|                        |                                |
|------------------------|--------------------------------|
| Body Type              | Line mount                     |
| Interface              | None                           |
| Body Features          | Through port 1 with gauge port |
| Mounting Hole Thread   | M6x1.0 - 6H                    |
| Mounting Hole Depth    | 12,7 mm                        |
| Mounting Hole Quantity | 2                              |
| Open Cavities          | 1                              |
| Cavity                 | T-162A                         |
| Port Size              | 3/8" BSPP                      |
| Model Weight           | 0.20 kg.                       |

## NOTES

**Important:** Carefully consider the maximum system pressure. The pressure rating of the manifold is dependent on the manifold material, with the port type/size a secondary consideration. Manifolds constructed of aluminum are not rated for pressures higher than 3000 psi (210 bar), regardless of the port type/size specified.

## PORT DESIGNATORS

| Modifiers              | Ports   |
|------------------------|---|
| AEU, /10, /11, /S, /S3 | Ports 1 & 2: 3/8" BSPP; Gage Port: 1/4" BSPP; |

## CONFIGURATION OPTIONS

Model Code Example: AEU

### MODIFIER

**6061-T651 Aluminum, Buna-N**

**/11** 6061-T651 Aluminum, Buna-N, Clear Anodize - Per MIL SPEC 8625F Type II, Class I

**/10** 6061-T651 Aluminum, Buna-N, Black Anodize - Per MIL SPEC 8625F Type II, Class II

**/S** 65-45-12 Ductile Iron, Buna-N, Dewatering Oil

**/S4** 65-45-12 Ductile Iron, Buna-N, Chem. Black

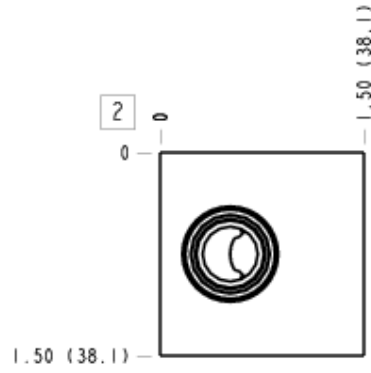
**/S3** 65-45-12 Ductile Iron, Buna-N, Trivalent Clear Zinc with Top Sealer

## MANIFOLD FACES

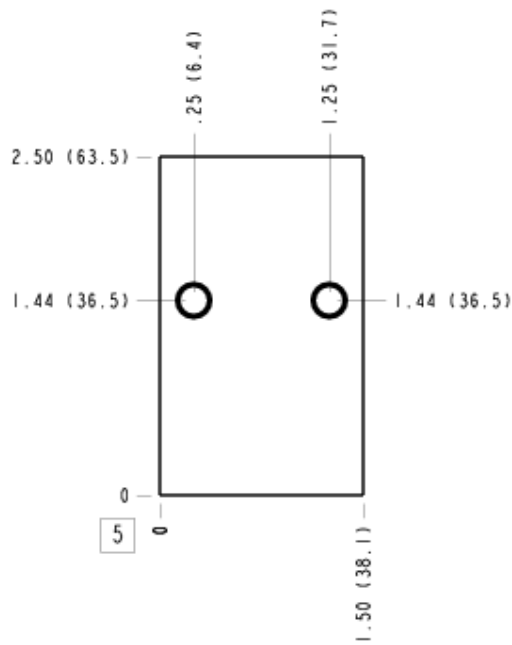
## FACE GRID

|   |    |    |    |
|---|----|----|----|
| 1 | 2  | 3  | 4  |
| 5 | 6  | 7  | 8  |
| 9 | 10 | 11 | 12 |

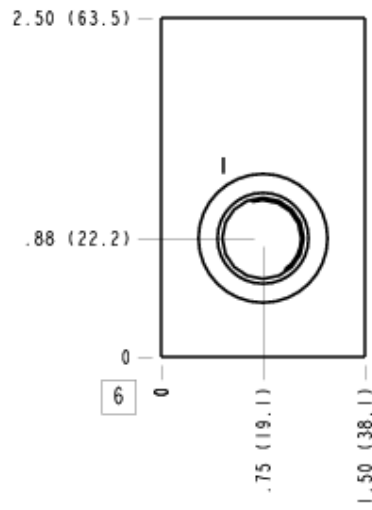
### Face 2



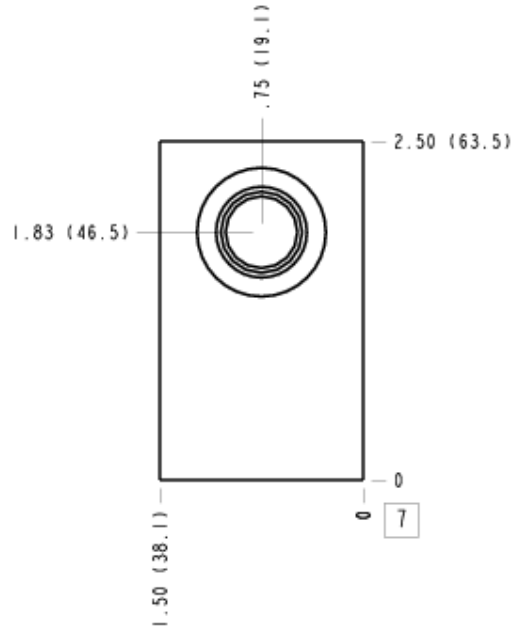
### Face 5



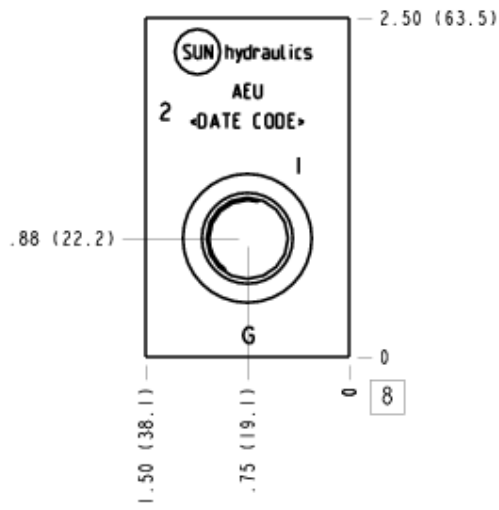
### Face 6



### Face 7



### Face 8



### Face 10

